

Woodleaf Reserve

N47 W22268 Woodleaf Way (Lot 14)
Pewaukee, WI 53072

Hamilton
Model
Ask For
Pricing

Hamilton Model Ask For Pricing

2,254 SF
+899 SF Finished Lower Level

3,153 SF Total Finished Space
2-Story
5 Bedrooms
3.5 Baths
Attached 3 Car Garage



Peaceful Country Living. Convenient City Location.

Homes by Towne is pleased to present the Hamilton, one of their quality, exceptionally designed new homes at Woodleaf Reserve. This spacious, single-family home includes extraordinary home features and numerous upgrades that will provide comfort and carefree living.

Located in the city of Pewaukee, Woodleaf Reserve is surrounded by preserves, open space and natural wetlands which provide a scenic and relaxing atmosphere. The conveniences of the city are also easily accessible. About 10 minutes from I-94 and 30 minutes from downtown Milwaukee, Woodleaf Reserve is near excellent schools, parks, shopping, restaurants, and recreation.

FEATURES

Kitchen

- Granite countertops
- Upgraded cabinets with glass cabinetry
- Large eat-in/prep island in painted finish
- Gourmet kitchen with stainless steel cook-top/double oven, dishwasher, decorator hood

Exterior

- Fiber cement siding
- Metal roof accents
- 8' Fiberglass front entry door
- Drywall complete garage
- Concrete driveway with brick inlay
- AZEK deck with gas fire pit
- Full landscaping and irrigation system

Other

- Partial rear exposure with 9' poured concrete basement
- Finished lower level with 899 SF
 - Reclaimed cream city bricks from historic Pabst Brewery
 - Wet bar with wine cabinet
- 9' ceilings on first floor
- Hand distressed cherry wood floors in kitchen, dining room, great room, and foyer
- Gas fireplace with custom mantle
- Board and batten accent in foyer
- Upgraded plumbing fixtures
- Quartz countertops in owner's bath and basement bar
- Full tile shower in owner's bath
- Mudroom with boot bench lockers
- Painted woodwork
- Custom ceilings
- Focus on Energy certified
- Control4 automation system
- Desirable open concept floor plan



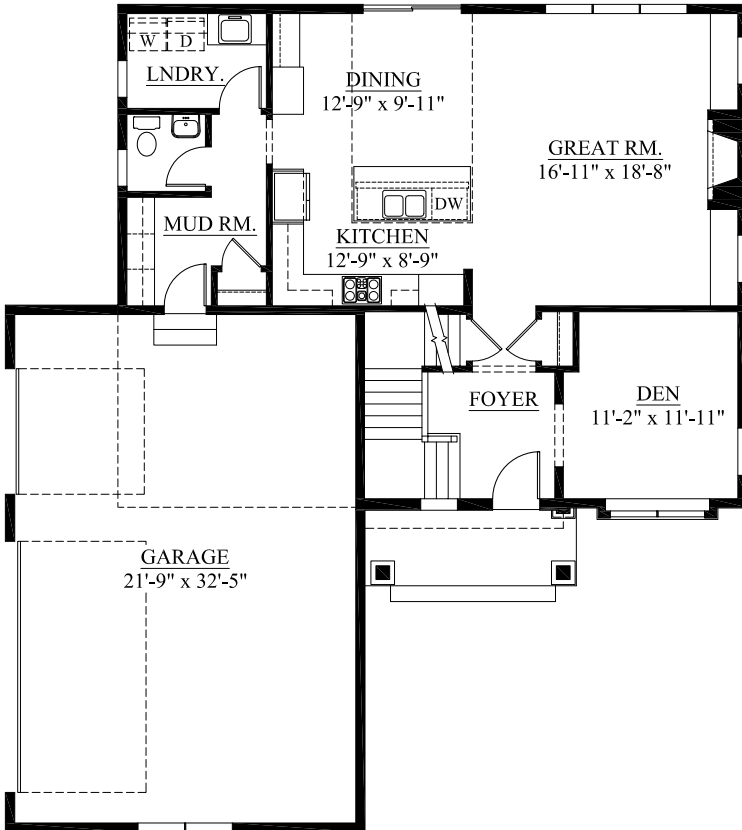
Mike Adams
414-274-2950
mgadams@hbtwi.com
www.homesbytowne.com

Woodleaf Reserve

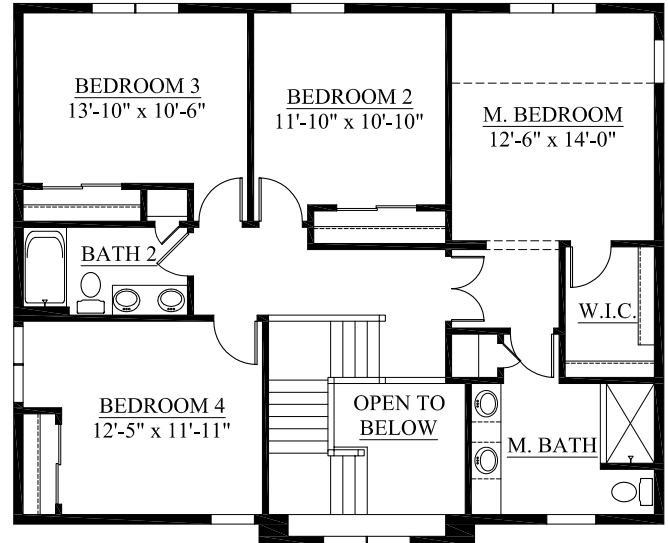
N47 W22268 Woodleaf Way (Lot 14)
Pewaukee, WI 53072

Hamilton
Model
Ask For
Pricing

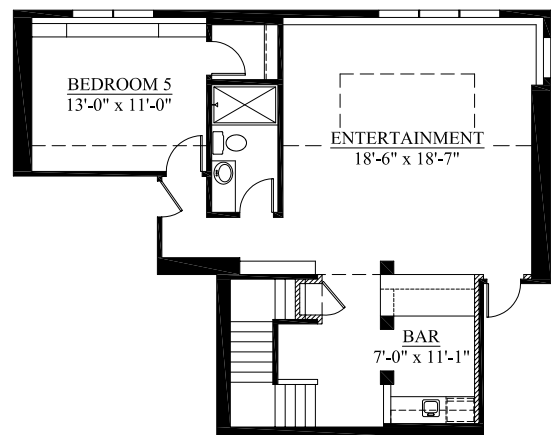
First Floor



Second Floor



Finished Lower Level



Features may vary according to floor plan. Homes by Towne reserves the right to change floor plans, specifications, and prices without prior notice. Special wall and window treatments, floor coverings, softscape and landscaping and many other items featured in and around the model or move-in-ready homes are decorator-suggested and not included in the purchase of the home. Room sizes and square footages are approximate.



04/05/18



Mike Adams
414-274-2950
mgadams@hbtwi.com
www.homesbytowne.com

