

LakeHouse Cove at Waterside

882 Seascape Place (Lot 280)
Clipper Series

Halyard
\$473,300

Halyard

Available 2019

2,078 sq. ft.

2 Bedroom

2 Bath

Den

3 Car Garage

(Inventory Home To Be Garage Left)



New Home Features

- Coastal Elevation
- Tray Ceilings in Foyers 1 & 2 and Great Room
- 42" Upper Level 3 Kitchen Cabinets with GE Profile Appliances
- Upgraded Quartz Countertops in Kitchen
- Below Kitchen Cabinet LED Lighting
- Upgraded Level 5 Carpet in All Bedrooms
- Upgraded Level 4 Tile in Kitchen, All Bathrooms, Foyers 1 & 2, Hallway to Second Bedroom, Mud Room, Laundry Room, Dinette, Great Room and Den

- Drywall Bump Outs with Glass Shelves in Great Room
- Upgraded Bathroom Cabinets
- Upgraded Moen Plumbing Fixtures
- Additional Lighting Added
- Additional Electrical Added
- Great Room Opens to Large Lanai
- Screened-in Lanai with One Door
- Gas Rough-in for Future Grill on Lanai
- Additional Landscaping

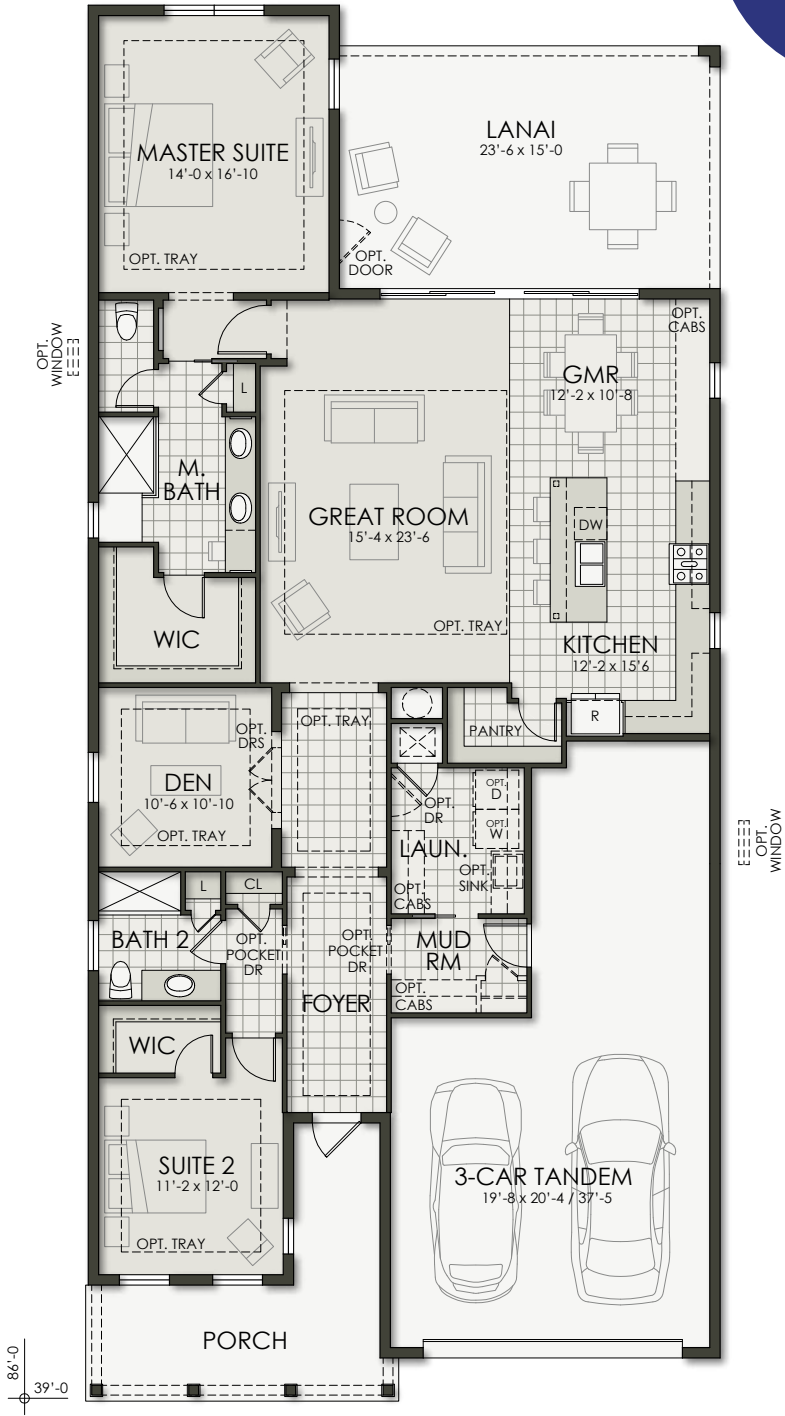
Community Features

- Amenity Center featuring: Lakehouse, Pool, Spa, Fitness Center, Boathouse, Play Areas, Event Lawn, Sunset Lawn, Poolside Cabanas, Bocce Court, Pickleball Courts, Firepits, 2 Dog Parks, Trail System, and Water Taxi Pick Up Location
- Convenient Access to Future Downtown Waterside Place
- Close to Gulf Coast Beaches
- Minutes Away to World Class Shopping and Dining
- Close to Several Area Hospitals
- Sarasota International Airport - 25 Minutes
- Tampa International Airport - 70 Minutes

LakeHouse Cove at Waterside

882 Seascape Place (Lot 280)
Clipper Series

Halyard
\$473,300



Inventory Home To Be Garage Left

Developer reserves the right to modify floor plans, elevations, specifications, features and prices without prior notice. Square footage and room sizes are approximate. Exterior treatments, window locations and room configurations may vary with elevation. Some decorating treatments in and around the model homes may not be included in the list price and are for display purposes only. All renderings and floor plans are artistic conceptions, and are not intended to be an actual depiction of the buildings, fencing, driveways or landscaping. © 2019 Homes by Towne®