

LakeHouse Cove at Waterside

8066 Tidal Point Way (Lot 245)
Clipper Series

Cay
\$493,900

Cay

Available Fall 2020

2,135 sq. ft.

2 Bedroom

2.5 Bath

Den

3 Car Garage

(Inventory Home To Be Garage Right)



New Home Features

- Coastal C Elevation
- Tray Ceilings in Foyers 1 & 2
- 42" Upper Level 3 Kitchen Cabinets with GE Profile Appliances
- Level 5 Quartz Countertops in Kitchen
- Upgraded Kitchen Sink
- Below Kitchen Cabinet LED Lighting
- Upgraded Level 3 Carpet in All Bedrooms
- Upgraded Level 4 Plank Tile in Kitchen, Bath 2, Foyers 1 & 2, Hallway to Second Bedroom, Mud Room, Laundry Room, Dinette, Great Room and Den
- Upgraded Level 3 18" x 18" Tile in Master Bathroom
- Frameless Glass with Pivot Door with Silver Finish Brackets, No Header in Bath 2
- Upgraded Bathroom Cabinets
- Upgraded Moen Plumbing Fixtures
- Additional Lighting Added
- Additional Electrical Added
- Great Room Opens to Large Lanai
- Screened-in Lanai with One Door
- Gas Rough-in for Future Grill on Lanai
- Upgraded Impact Windows and Sliding Glass Door

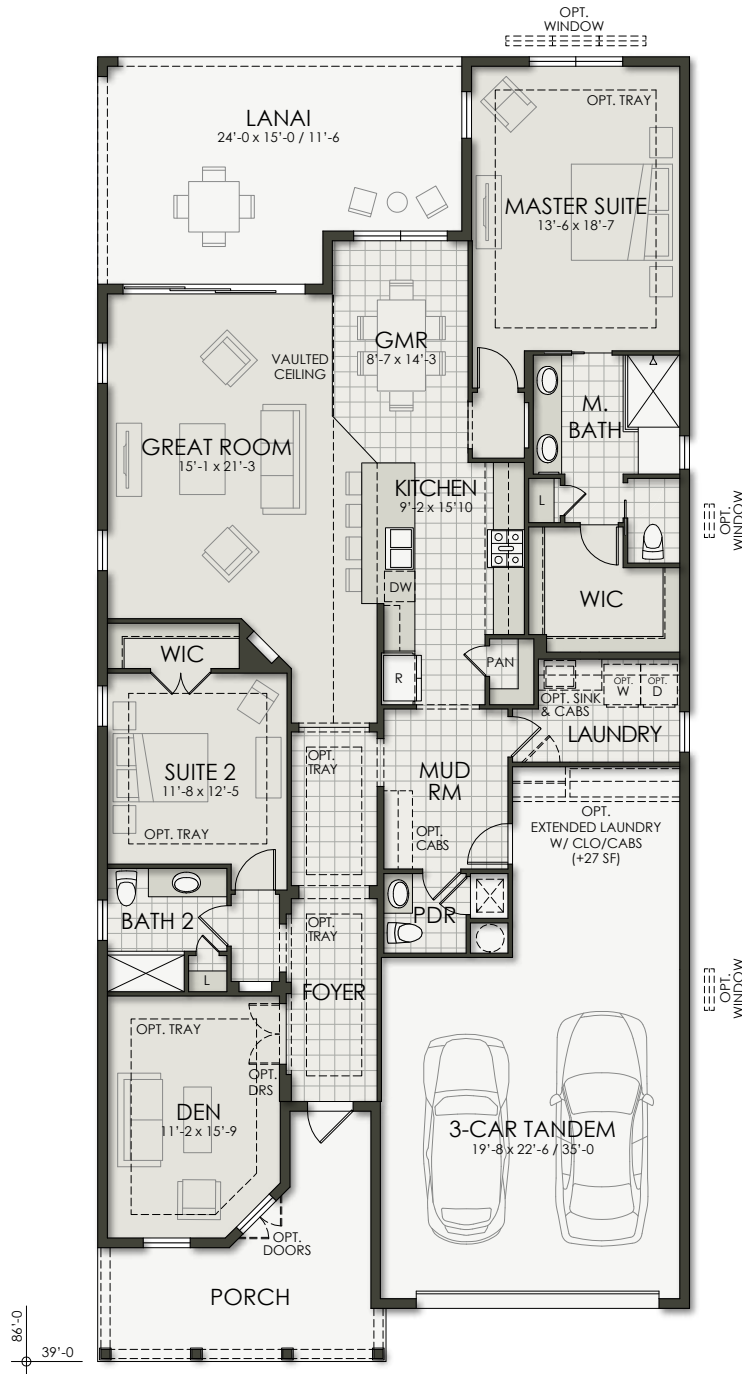
Community Features

- Amenity Center featuring: Lakehouse, Pool, Spa, Fitness Center, Boathouse, Play Areas, Event Lawn, Sunset Lawn, Poolside Cabanas, Bocce Court, Pickleball Courts, Firepits, 2 Dog Parks, Trail System, and Water Taxi Pick Up Location
- Convenient Access to Future Downtown Waterside Place
- Close to Gulf Coast Beaches
- Minutes Away to World Class Shopping and Dining
- Close to Several Area Hospitals
- Sarasota International Airport - 25 Minutes
- Tampa International Airport - 70 Minutes

LakeHouse Cove at Waterside

8066 Tidal Point Way (Lot 245)
Clipper Series

Cay
\$493,900



Inventory Home To Be Garage Right

Developer reserves the right to modify floor plans, elevations, specifications, features and prices without prior notice. Square footage and room sizes are approximate. Exterior treatments, window locations and room configurations may vary with elevation. Some decorating treatments in and around the model homes may not be included in the list price and are for display purposes only. All renderings and floor plans are artistic conceptions, and are not intended to be an actual depiction of the buildings, fencing, driveways or landscaping. © 2019 Homes by Towne®