

GreyHawk Landing

11702 Petunia Terrace
Woodlake Preserve (Lot 465)

Windsong X
\$465,200

Windsong X - Available Late 2019

2,442 sq. ft.
3 Bedroom
2.5 Bath
Den
3 Car Garage
(Inventory Home To Be Garage Left)



New Home Features

- Great Room Opens to Large Extended Lanai
- GE Stainless Steel Appliance Package with Side-by-Side Refrigerator
- Quartz Countertops in Kitchen with Super Single Silgranit Undermount Sink
- Upgraded Kitchen Cabinets
- Quartz Countertops in All Bathrooms with Undermount Sinks
- Upgraded Moen Plumbing Fixtures Throughout
- Above and Below Cabinet Lighting With Light Valance
- 12' Ceiling in Great Room, Dining Room and Foyer
- Tray Ceiling in Great Room
- 5 1/4" Crown Molding in Foyer and Master Suite Ceiling Perimeter
- Frameless Clear Glass Shower Enclosure in Master Bath
- Structured Wiring Package
- 16 Seer High Efficiency Heat Pump with Variable Speed Air Handler
- Upgraded Floor Tile Laid on Diagonal in Kitchen, Laundry Room, Hallway to Secondary Bedrooms, Great Room and Dining Room
- Dining Room Framed Accent Mirror
- Storm Rated Insulated Low E Windows
- 8' Height Garage Doors
- 8' Height Front Entry Door and Sidelight
- Garage Coach Lights
- Brick Paver Drive, Walkway, Front Entry and Lanai
- Taaex In-Wall Pest Tube System
- Epoxy Finished Garage Floor
- Additional Electrical Added

Community Features

- Gated Community
- Clubhouses, 2 Resort-style Pools with Hot Tubs, Fitness Center, Tennis Courts, Basketball Court and Pickleball Court
- Soccer Fields and Baseball Field
- Extensive Walking Paths and Biking Trails Bordering Preserves and Lakes
- Fishing
- Close to Gulf Coast Beaches
- Minutes Away to World Class Shopping and Dining
- Close to Several Area Hospitals
- Sarasota International Airport - 25 Minutes
- Tampa International Airport - 50 Minutes



GreyHawk Landing Sales Office
12614 Goldenrod Avenue
Bradenton, FL 34212

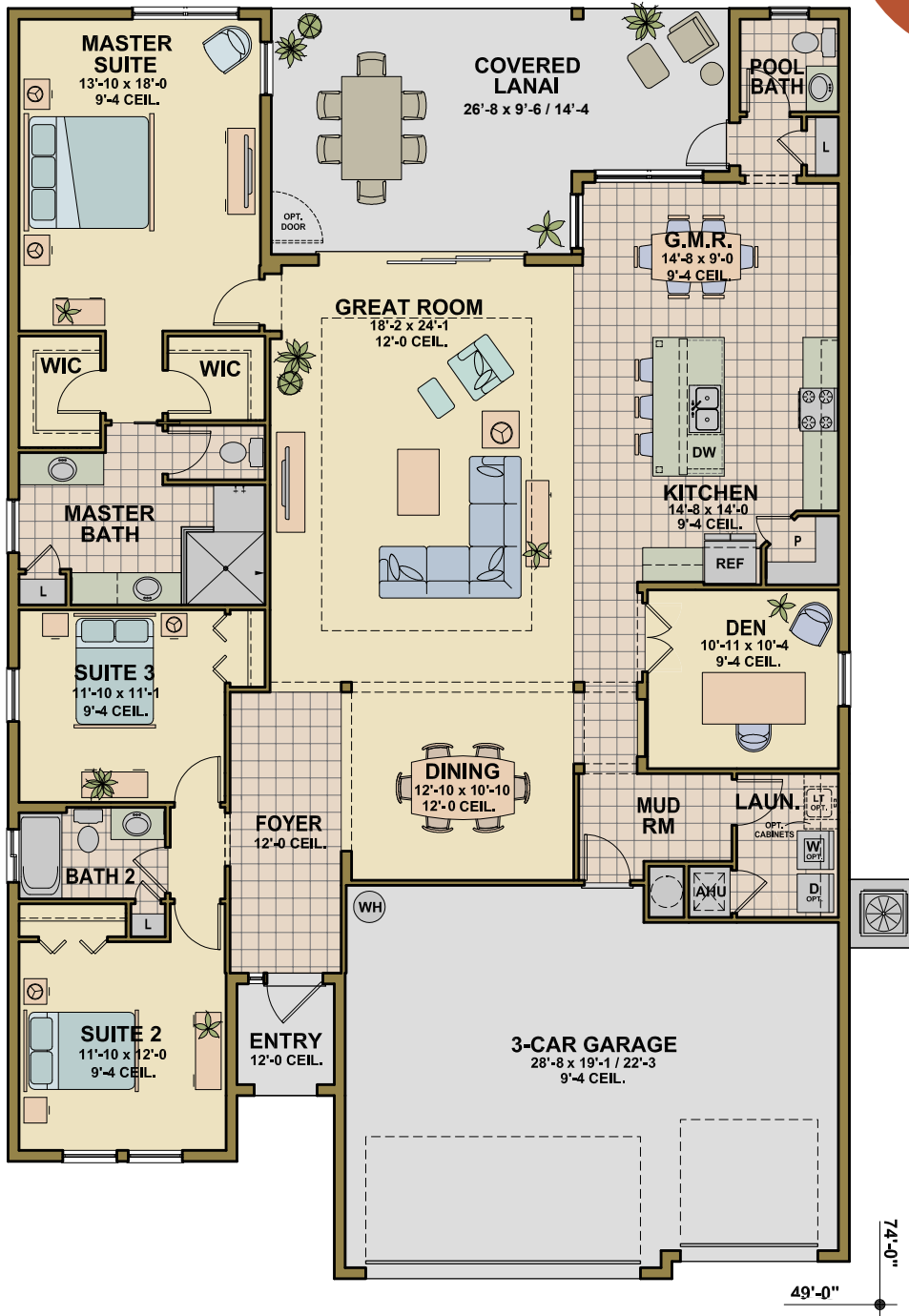
Glenn Rausch, Broker Associate
Homes by Towne Realty, Inc.
O: 941-748-9300
C: 941-737-7380
grausch@homesbytowne.com



GreyHawk Landing

11702 Petunia Terrace
Woodlake Preserve (Lot 465)

Windsong X
\$465,200



Inventory Home To Be Garage Left

Developer reserves the right to modify floor plans, elevations, specifications, features and prices without prior notice. Square footage and room sizes are approximate. Exterior treatments, window locations and room configurations may vary with elevation. Some decorating treatments in and around the model homes may not be included in the list price and are for display purposes only. All renderings and floor plans are artistic conceptions, and are not intended to be an actual depiction of the buildings, fencing, driveways or landscaping. © 2019 Homes by Towne®



GreyHawk Landing Sales Office
12614 Goldenrod Avenue
Bradenton, FL 34212

Glenn Rausch, Broker Associate
Homes by Towne Realty, Inc.
O: 941-748-9300
C: 941-737-7380
grausch@homesbytowne.com



04/03/19