

# Mountain Valley Lake

1015 St. Andrews Drive (Lot 26-27)  
Burleson, TX 76028

**Benton II**  
**\$267,900**

## Benton II Available Now

2,122 sq. ft.  
2-Story  
3 Bedrooms  
3 Baths  
Bonus Room  
Attached 2 Car Garage



### Peaceful Country Living. Convenient City Location.

Located just south of Fort Worth, the growing city of Burleson, Texas is an ideal location for this family-friendly neighborhood. Residents will enjoy the rolling hills and wooded views, a recreational center with a Jr. Olympic pool and a 20-acre stocked private lake with fishing pier. Close to shopping, entertainment and quality schools, Mountain Valley Lake combines the convenience of city life with the beauty of the country!

### FEATURES

#### Kitchen

- GE stainless steel appliance package
- Granite countertops
- Full cabinet hardware throughout
- Pendant lights above kitchen bar
- Abundant tile flooring
- Custom tile backsplash
- Stainless steel under-mount sink with designer faucet
- Generous pantry storage

#### Exterior

- Brick exterior with elevation enhancements
- Designer front door
- Stained cedar shutters
- Stained cedar posts on front porch
- Covered patio
- Fully fenced yard
- Finished garage with stained cedar garage door
- Coach lighting
- Full sod and irrigation system

#### Other

- Environments for Living Gold Series
- Stone fireplace raised hearth and stained mantle
- Upstairs bonus room with full bath
- Spacious laundry room with tile flooring
- Enlarged walk-in custom tiled master bath shower with rain shower head
- Upgraded lighting fixtures
- Patterned tile tub surround in bath 2
- Decorative framed mirrors in all bathrooms
- Upgraded door hardware and bath accessories
- Upgraded carpeting throughout
- Full window blinds throughout
- Desirable open concept floor plan



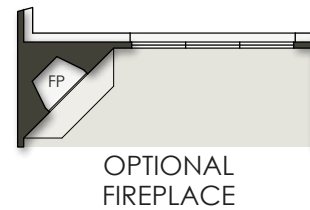
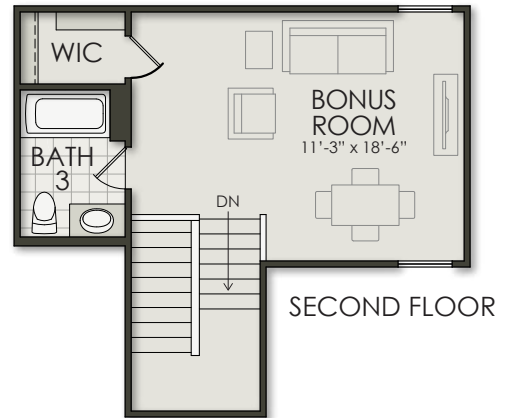
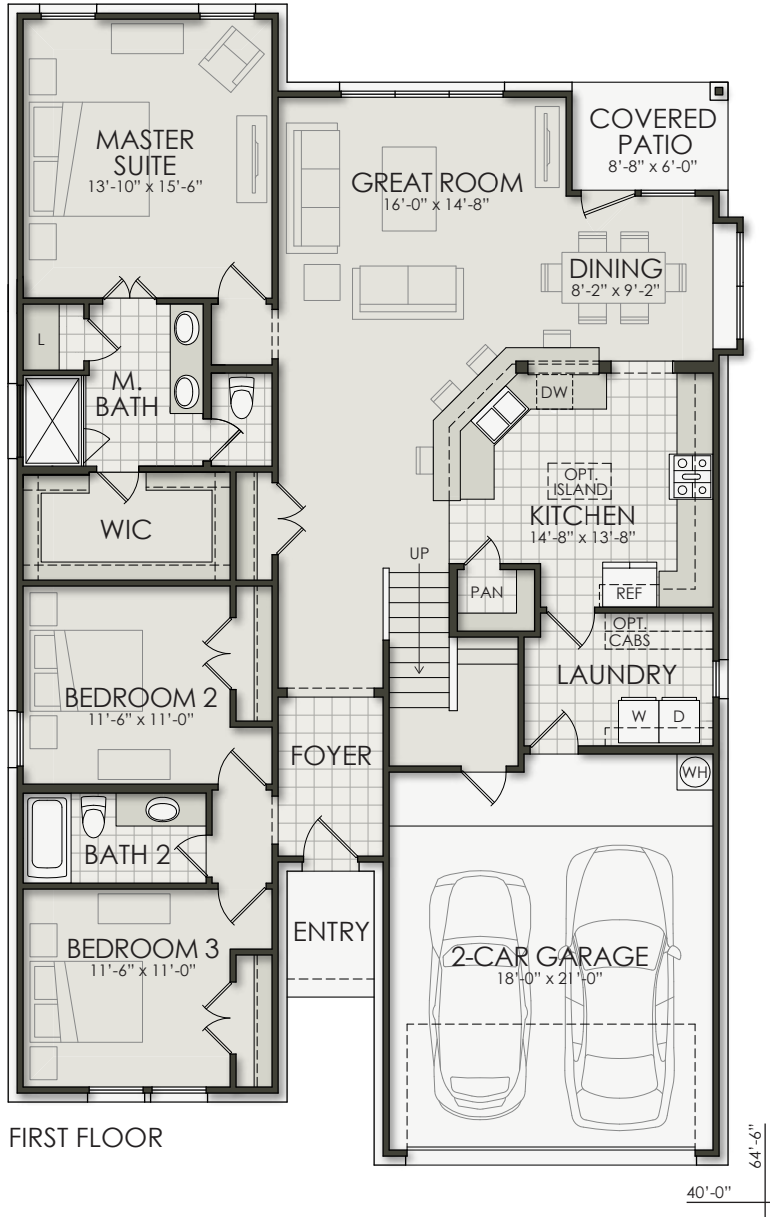
Kim Burchfield  
817-484-3350  
kim.burchfield@tx.homesbytowne.com

Ray Brown  
817-484-3350  
ray.brown@tx.homesbytowne.com  
www.homesbytowne.com

# Mountain Valley Lake

1015 St. Andrews Drive (Lot 26-27)  
Burleson, TX 76028

**Benton II**  
**\$267,900**



Developer reserves the right to modify floor plans, elevations, specifications, features and prices without prior notice. Square footage and room sizes are approximate. Exterior treatments, window locations and room configurations may vary with elevation. Some decorating treatments in and around the model homes may not be included in the list price and are for display purposes only. All renderings and floor plans are artistic conceptions, and are not intended to be an actual depiction of the buildings, fencing, driveways or landscaping. © 2017 Homes by Towne®



12/14/17



Kim Burchfield  
817-484-3350  
kim.burchfield@tx.homesbytowne.com

Ray Brown  
817-484-3350  
ray.brown@tx.homesbytowne.com  
www.homesbytowne.com