

# GreyHawk Landing

1034 Buttercup Glen  
Sanderling Cove (Lot 473)

Centera  
\$395,200

## Centera

Available 2017

2,511 sq. ft.  
3 Bedroom  
3 Bath  
Den  
Study  
2 Car Garage  
(Inventory Home To Be Garage Left)



## New Home Features

- Great Room Opens to Large Extended Lanai
- GE Stainless Steel Appliance Package with Side-by-Side Refrigerator
- 3cm Granite Countertops in Kitchen with Stainless Steel Undermount Sink
- Verona Marble Countertops in All Bathrooms with Undermount Sinks
- Upgraded Moen Plumbing Kitchen Faucet
- Above and Below Cabinet Lighting With Light Valance
- Crown Molding in Foyer and Master Suite Perimeter
- Tray Ceiling in Foyer
- Vaulted Ceilings in Great Room and Kitchen
- Frameless Clear Glass Shower Enclosure in Master Bath
- Structured Wiring Package
- 16 Seer High Efficiency Heat Pump with Variable Speed Air Handler
- 18" x 18" Tile in Kitchen, Dinette, All Bathrooms, Laundry Room, Hallway to Secondary Bedrooms and Great Room on Diagonal
- Storm Rated Insulated Low E Windows
- 5 1/4" Baseboard
- 8' Height Garage Doors
- 8' Height Front Entry Door and Sidelight
- 8' Height Interior Doors
- Pre-wire Security System
- Coach Lights and Exterior Hanging Entry Light
- Brick Paver Drive, Walkway, Front Entry and Lanai
- Taaex In-Wall Pest Tube System
- Rough-in for Summer Kitchen
- Additional Electrical Added

## Community Features

- Gated Community
- Clubhouses, 2 Resort-style Pools with Hot Tubs, Fitness Center, Tennis Courts and Basketball Court
- Soccer Fields and Baseball Field
- Extensive Walking Paths and Biking Trails Bordering Preserves and Lakes
- Fishing
- Close to Gulf Coast Beaches
- Minutes Away to World Class Shopping and Dining
- Close to Several Area Hospitals
- Sarasota International Airport - 25 Minutes
- Tampa International Airport - 50 Minutes



Robyn Germain, Sales Associate  
Homes by Towne Realty, Inc.  
O: 941-748-9300  
C: 941-962-4271  
rgermain@homesbytowne.com

Sarah Lowry, Sales Associate  
Homes by Towne Realty, Inc.  
O: 941-748-9300  
C: 941-400-9026  
slowry@homesbytowne.com

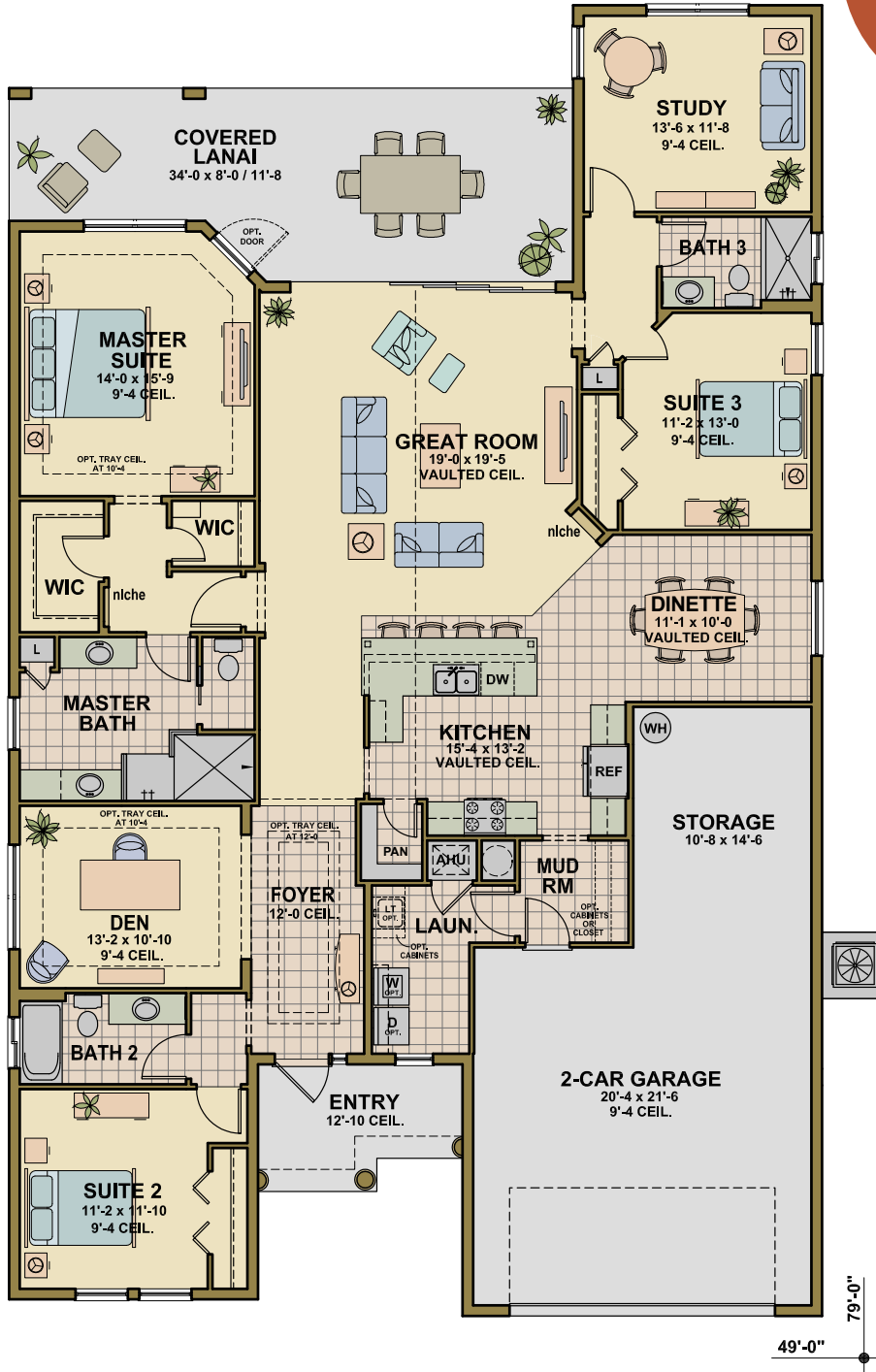
Glenn Rausch, Broker Associate  
Homes by Towne Realty, Inc.  
O: 941-748-9300  
C: 941-737-7380  
grausch@homesbytowne.com



# GreyHawk Landing

1034 Buttercup Glen  
Sanderling Cove (Lot 473)

Centera  
\$395,200



Inventory Home To Be Garage Left

Developer reserves the right to modify floor plans, elevations, specifications, features and prices without prior notice. Square footage and room sizes are approximate. Exterior treatments, window locations and room configurations may vary with elevation. Some decorating treatments in and around the model homes may not be included in the list price and are for display purposes only. All renderings and floor plans are artistic conceptions, and are not intended to be an actual depiction of the buildings, fencing, driveways or landscaping. © 2017 Homes by Towne®



Robyn Germain, Sales Associate  
Homes by Towne Realty, Inc.  
O: 941-748-9300  
C: 941-962-4271  
rgermain@homesbytowne.com

Sarah Lowry, Sales Associate  
Homes by Towne Realty, Inc.  
O: 941-748-9300  
C: 941-400-9026  
slowry@homesbytowne.com

Glenn Rausch, Broker Associate  
Homes by Towne Realty, Inc.  
O: 941-748-9300  
C: 941-737-7380  
grausch@homesbytowne.com

