

# Morgan Ranch

3560 Arden Villa Place (Homesite 1)  
Roseville, CA 95747

Plan Two  
\$524,376

2,399 sq. ft.  
Single Story  
3 Bedroom  
2.5 Bath  
+ Entry Courtyard  
3 Car Garage

Elevation B



Granite Kitchen Countertops with Full Backsplash  
Under Cabinet Lighting throughout Kitchen  
Stainless Steel Appliances  
Midnight Stained Cabinets Throughout  
Ceiling Fans in all Bedrooms and at Great Room  
Upgraded Tile Floors  
Upgraded Carpet and Pad



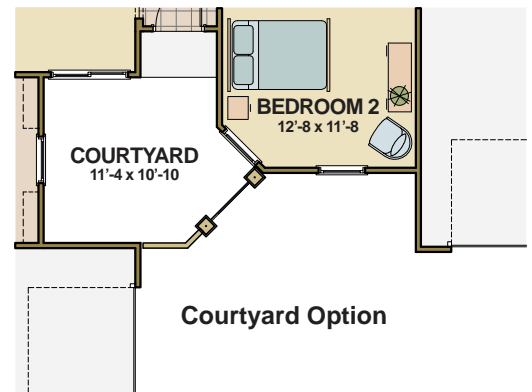
SALES CENTER  
3540 Arden Villa Court | Roseville, CA 95747  
O: 916-262-8800 | E: Sales@HBTca.com  
[www.homesbytowne.com](http://www.homesbytowne.com)

# Morgan Ranch

3560 Arden Villa Place (Homesite 1)  
Roseville, CA 95747

Plan Two  
\$524,376

Living Area ..... 2,399 SF  
Garage ..... 781 SF  
Total Area ..... 3,180 SF



Plan 2

Developer reserves the right to modify floor plans, elevations, specifications, features and prices without prior notice. Square footage and room sizes are approximate. Exterior treatments, window locations and room configurations may vary with elevation. Some decorating treatments in and around the model homes may not be included in the list price and are for display purposes only. All renderings and floor plans are artistic conceptions, and are not intended to be an actual depiction of the buildings, fencing, driveways or landscaping. © 2016 Homes by Towne®



SALES CENTER | 3540 Arden Villa Court | Roseville, CA 95747  
O: 916-262-8800 | E: Sales@HBTca.com  
www.homesbytowne.com



6/9/17